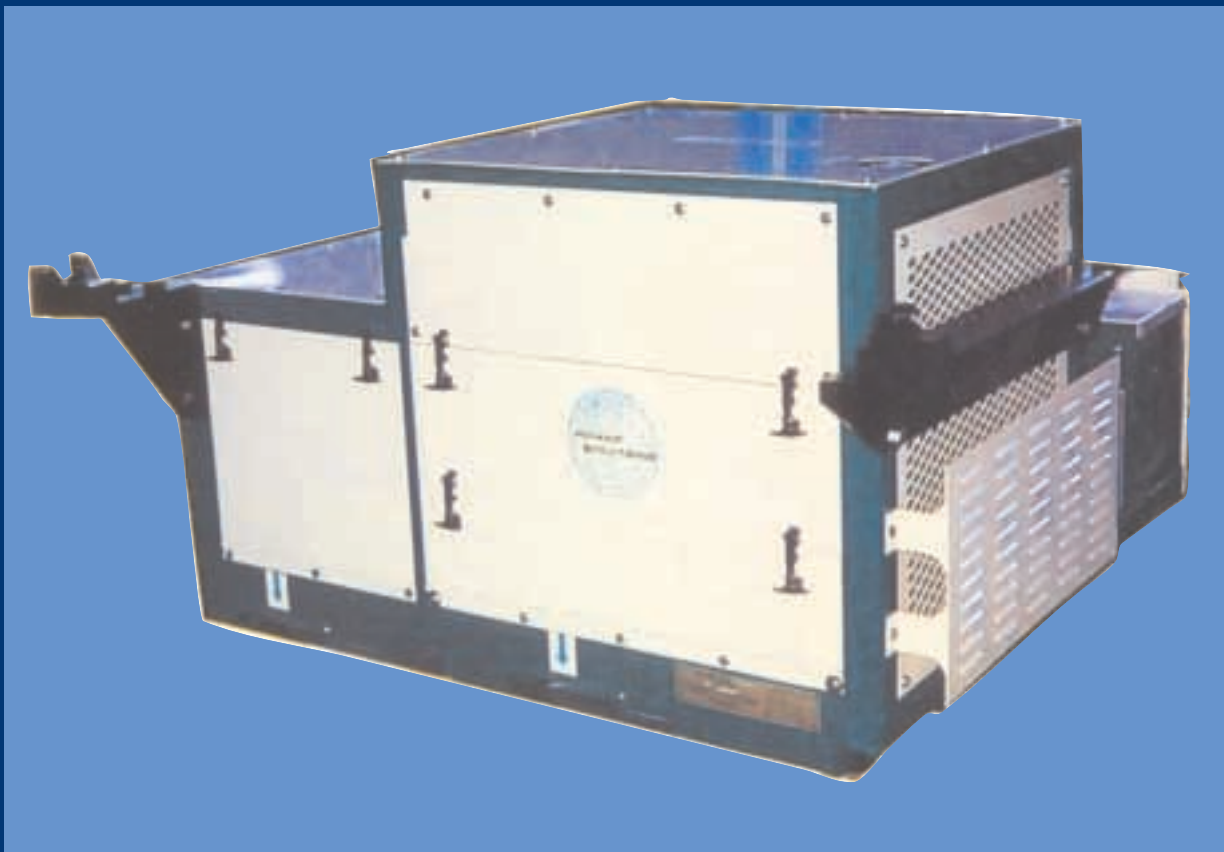


# Generator Set

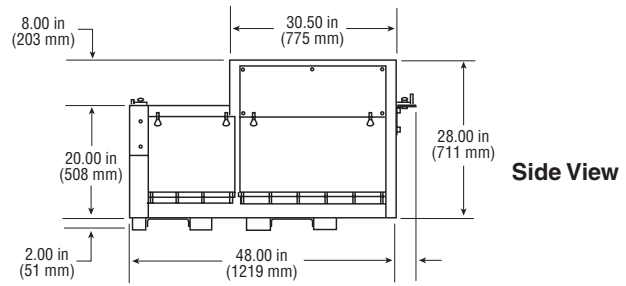
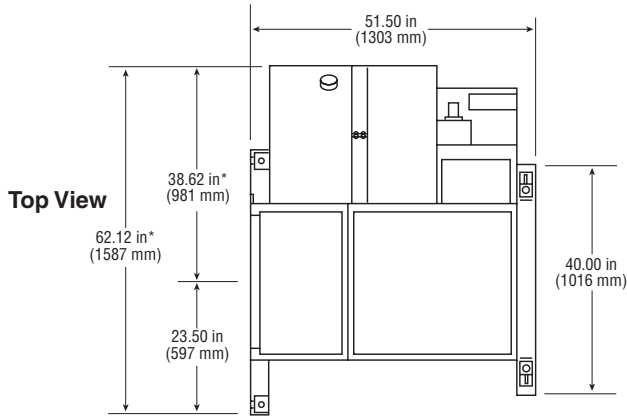
---

Between Rails /Liquid Cooled  
Model BRG 540 PL



**KLINGE CORPORATION**

---



\* Dimensions for 70 gallon fuel tank models are 71.12" (1806 mm) and 47.62" (1210 mm) respectively.

## General

The BRG 540-PL Between Rails Generator Set provides 15 kW (18.75 kVA) of power and is specifically designed to meet the tough under chassis operating environment. Built to fit 20' chassis, 40' chassis and 20' sliders. Exclusive design mounts to 8", 10" & 12" I beams providing maximum ground clearance fast attachment with four point, captive mounting system. Mounts in line with engine facing forward for better airflow and easier maintenance. All service components are accessible with unit mounted on chassis.

## Construction

- Welded steel frame with incorporated aluminium fuel tank.
- Aluminium doors and panels
- Stainless steel hardware
- Corrosion resistant finish enhances long life in marine environments
- Waterproof control box

## Temperature Operating Range

-25° F to 122° F (-32° C to 50° C)

## Fuel Capacity

Fuel Tank Capacity	55 Gal (208 L)	76 Gal (288 L)
Usable fuel	50 Gal (190 L)	70 Gal (265 L)

## Running Time

	50 Gal	70 Gal
• Typical service load	70 Hrs	100 Hrs
• Continuous full load	50 hrs	70 Hrs

## Weight

• Tare weight w/o fuel	1300 lb/590 kg	1345/610 kg
• Weight of fuel	375 lb/170 kg	520 lb/236 kg

All specifications are subject to change without notice.

For further information about this or any Klinge-product, please contact us at any of our offices.

## Engine

- Isuzu Diesel 2.2 l, 4 cylinder, liquid cooled 34 BHP (25 kW) at 1800 RPM
- 18 QT. (17 L) oil capacity providing 1000 operation hours between oil changes
- Glow plugs assisted start
- Fuel filter/water separator assembly with incorporated 12V-200 Watt heater
- Automatic air-bleeding system provided by the engine's electromagnetic fuel pump

## Generator

- Lima 15 kW (18.75 KVA) 460/230 V 60 Hz brushless and self-regulating, specially engineered for reefer applications and to withstand the tough under chassis operating environment.
- Labyrinth baffled air intake minimizes solid particle and moisture penetration
- Single sealed heavy duty bearing

## Controls

- AC voltmeter, DC ammeter, hour meter, frequency-measuring receptacle, load switch, coolant temperature and oil pressure gauge.
- Easy two switch operation "On/Off" and "Start/Preheat"
- An electronic control and fault protection system protects against low oil pressure, high coolant temperature, single phasing, overload, battery drain and personal injury from inadvertent removal of plug. Fault indication led's remain lit until corrective action is taken. Controls are labeled in both English and Spanish; other languages are available on request.

## Options

- Dual voltage 230/460 V operation with voltage selector
- Customer specified power outlets
- Customized fuel tank options
- European and Japanese mounting systems

# KLINGE CORPORATION

4075 East Market St. • P.O. Box 3608 • York • PA 17402-0628 USA

Telephone: 717 840-4500 • Fax: 717 840-4501  
E-mail: info@klingecorp.com



18 Upsalagade • DK-2100 Copenhagen • Denmark

Telephone: +45 3543 7530 • Fax: +45 3526 2221  
E-mail: kcas@klingecorp.com